

# AXM RANGE



FULLY  APPROVED



## AXIOM AXM WIRING ACCESORIES

Axiom **AXM** Accessories are a new comprehensive range of traditional white moulded wiring accessories, priced to meet the day to day needs of electrical contractors and guaranteed for 25 years. This **AXM** range is a classic CED Electrical Group product, designed and manufactured to high quality standards yet priced very competitively – offering excellent value for money and profit maximising opportunities for stockists. Over fifty product lines include 10A to 45A switches; 13A sockets, spurs and connections units; AV sockets; dimmer switches; dry lining and pattress boxes plus lamp holders and ceiling switches – many of which are ASTA approved and all are UKCA, CE marked.

FULLY  APPROVED



All CED Axiom Contractor Wiring Accessories have been specially designed to ensure they meet the contractor need for reliable products at a competitive price point and can be purchased safe in the knowledge that they meet all current standards.

## SWITCHES

### Switches (10A)

#### Features & Benefits

- Approvals:- (ASTA, UKCA, CE)
- Construction:- Urea Formaldehyde
- Voltage:- 240v AC 50/60Hz
- Colour:- White
- Guarantee:- 25 Years
- Supplied with M3.5 fixing screws and screw covers
- Front Plate Depth - Single Pole - 9mm & Double Pole - 13mm



Dimensions  
86 x 86 x 9mm

Fixing Centre  
60.3mm

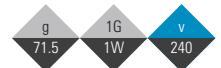
Minimum Box Depth  
16mm



Code: **AXMS11**

1 Gang 1 Way Light Switch

- 10Amp (X rated) suitable for inductive load
- Supplied with M3.5 x 25mm fixing screws
- Minimum Depth - Metal/Plastic/PVC Box 16mm
- Terminal Capacity - 3x1.5mm<sup>2</sup>
- Three Pole Isolators provide isolation of fans for maintenance or repair without isolation of complete circuit



Minimum / Box quantity: 10/200

Minimum order quantity: 10



Dimensions  
86 x 86 x 9mm  
Fixing Centre  
60.3mm  
Minimum Box Depth  
16mm



### Code: AXMS12

1 Gang 2 Way Light Switch

- 10Amp (X rated) suitable for inductive load
- Supplied with M3.5 x 25mm fixing screws
- Minimum Depth - Metal/Plastic/PVC Box 16mm
- Terminal Capacity - 3x1.5mm<sup>2</sup>
- Three Pole Isolators provide isolation of fans for maintenance or repair without isolation of complete circuit

g	1G	v
66.7	2W	240

Minimum / Box quantity: 10/200  
Minimum order quantity: 10



Dimensions  
86 x 86 x 9mm  
Fixing Centre  
60.3mm  
Minimum Box Depth  
16mm



### Code: AXMS22

2 Gang 2 Way Light Switch

- 10Amp (X rated) suitable for inductive load
- Supplied with M3.5 x 25mm fixing screws
- Minimum Depth - Metal/Plastic/PVC Box 16mm
- Terminal Capacity - 3x1.5mm<sup>2</sup>
- Three Pole Isolators provide isolation of fans for maintenance or repair without isolation of complete circuit

g	2G	v
71.5	2W	240

Minimum / Box quantity: 10/200  
Minimum order quantity: 10



Dimensions  
86 x 86 x 9mm  
Fixing Centre  
60.3mm  
Minimum Box Depth  
16mm



### Code: AXMS32

3 Gang 2 Way Light Switch

- 10Amp (X rated) suitable for inductive load
- Supplied with M3.5 x 25mm fixing screws
- Minimum Depth - Metal/Plastic/PVC Box 16mm
- Terminal Capacity - 3x1.5mm<sup>2</sup>
- Three Pole Isolators provide isolation of fans for maintenance or repair without isolation of complete circuit

g	3G	v
100.9	2W	240

Minimum / Box quantity: 10/200  
Minimum order quantity: 10



Dimensions  
86 x 146 x 9mm  
Fixing Centre  
120.6mm  
Minimum Box Depth  
16mm



### Code: AXMS42

4 Gang 2 Way Light Switch

- 10Amp (X rated) suitable for inductive load
- Supplied with M3.5 x 25mm fixing screws
- Minimum Depth - Metal/Plastic/PVC Box 16mm
- Terminal Capacity - 3x1.5mm<sup>2</sup>
- Three Pole Isolators provide isolation of fans for maintenance or repair without isolation of complete circuit

g	4G	v
n/a	2W	240

Minimum / Box quantity: 10/100  
Minimum order quantity: 10

## SWITCHES

Switches (10A)



Dimensions  
86 x 86 x 9mm  
Fixing Centre  
60.3mm  
Minimum Box Depth  
16mm



Code: **AXMSINT**

1 Gang Intermediate

- 10Amp (X rated) suitable for inductive load
- Supplied with M3.5 x 25mm fixing screws
- Minimum Depth - Metal/Plastic/PVC Box 16mm
- Terminal Capacity - 3x1.5mm<sup>2</sup>
- Three Pole Isolators provide isolation of fans for maintenance or repair without isolation of complete circuit

g n/a	1G n/a	v 240
----------	-----------	----------

Minimum / Box quantity: 10/200

Minimum order quantity: 10



Dimensions  
86 x 86 x 9mm  
Fixing Centre  
60.3mm  
Minimum Box Depth  
16mm



Code: **AXMFI3P**

1 Gang Fan Isolator

- 10Amp (X rated) suitable for inductive load
- Supplied with M3.5 x 25mm fixing screws
- Minimum Depth - Metal/Plastic/PVC Box 16mm
- Terminal Capacity - 3x1.5mm<sup>2</sup>
- Three Pole Isolators provide isolation of fans for maintenance or repair without isolation of complete circuit

g 100.9	1G n/a	v 240
------------	-----------	----------

Minimum / Box quantity: 10/200

Minimum order quantity: 10



Dimensions  
87 x 20 x 32mm  
Fixing Centre  
60.3mm (Vertical)  
Minimum Box Depth  
32mm



Code: **AXMSARC**

1 Gang Architrave

- 10Amp (X rated) suitable for inductive load
- Supplied with M3.5 x 25mm fixing screws
- Minimum Depth - Metal/Plastic/PVC Box 16mm
- Terminal Capacity - 3x1.5mm<sup>2</sup>
- Three Pole Isolators provide isolation of fans for maintenance or repair without isolation of complete circuit

g n/a	1G n/a	v 240
----------	-----------	----------

Minimum / Box quantity: 10/200

Minimum order quantity: 10



Dimensions  
86 x 86 x 9mm  
Fixing Centre  
60.3mm  
Minimum Box Depth  
16mm



Code: **AXMSBELL**

1 Gang Bell

- 10Amp (X rated) suitable for inductive load
- Supplied with M3.5 x 25mm fixing screws
- Minimum Depth - Metal/Plastic/PVC Box 16mm
- Terminal Capacity - 3x1.5mm<sup>2</sup>
- Three Pole Isolators provide isolation of fans for maintenance or repair without isolation of complete circuit

g n/a	1G n/a	v 240
----------	-----------	----------

Minimum / Box quantity: 10/200

Minimum order quantity: 10



## SWITCHES

Switches (20A)



### Features & Benefits

- Approvals:- (UKCA, CE)
- Construction:- Urea Formaldehyde
- Voltage:- 240v AC 50/60Hz
- Colour:- White
- Guarantee:- 25 Years



Dimensions  
86 x 86 x 9mm  
Fixing Centre  
60.3mm (Vertical)  
Minimum Box Depth  
25mm



Code: AXMS20

20A Switch (Double Pole)

- Flex outlet at lower edge by knockout (choice of use)
- Supplied with M3.5 x 30mm fixing screws
- Cable Clamp accommodates 2.5mm<sup>2</sup> flexible cable
- Minimum Depth - Metal/Plastic/PVC Box 25mm
- Terminal Capacity - 3 x 2.5mm<sup>2</sup>, 4 x 2.5mm<sup>2</sup> (Earth)



Minimum / Box quantity: 10/200

Minimum order quantity: 10



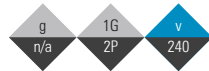
Dimensions  
86 x 86 x 9mm  
Fixing Centre  
60.3mm  
Minimum Box Depth  
25mm



Code: AXMS20N

20A Switch + Neon (Double Pole)

- Flex outlet at lower edge by knockout (choice of use)
- Supplied with M3.5 x 30mm fixing screws
- Cable Clamp accommodates 2.5mm<sup>2</sup> flexible cable
- Minimum Depth - Metal/Plastic/PVC Box 25mm
- Terminal capacity - 3 x 2.5mm<sup>2</sup>, 4 x 2.5mm<sup>2</sup> (Earth)



Minimum / Box quantity: 10/200

Minimum order quantity: 10

## SOCKETS

Single & Twin Sockets (13A)



### Features & Benefits

- Approvals:- (ASTA, UKCA, CE)
- Construction:- White Urea Formaldehyde
- Voltage:- 240v AC 50/60Hz
- Contact Gap - 3mm
- Minimum Depth - Plastic/PVC box - 25mm
- Terminal Capacity - 3 x 2.5mm<sup>2</sup> (13Amp only)
- 2 Earth Terminals for easy installation - Single Pole
- Supplied with M3.5 x 30mm fixing screws and screw covers



Dimensions  
87 x 20 x 32mm  
Fixing Centre  
60.3mm (Vertical)  
Minimum Box Depth  
25mm



### Code: AXMSSK1

1 Gang Switched 13A

- Contact Gap - 3mm
- Minimum Depth - Plastic/PVC box - 25mm
- Terminal Capacity - 3 x 2.5mm<sup>2</sup> (13Amp only)
- 2 Earth Terminals for easy installation - Single Pole
- Supplied with M3.5 x 30mm fixing screws
- Front Plate Depth - Single Pole - 9mm



Minimum / Box quantity: 10/200

Minimum order quantity: 10

Dimensions  
86 x 86 x 9mm  
Fixing Centre  
60.3mm  
Minimum Box Depth  
25mm



### Code: AXMSSK1/USB

1 Gang Switched/USB 13A

- Contact Gap - 3mm
- Minimum Depth - Plastic/PVC box - 25mm
- Terminal Capacity - 3 x 2.5mm<sup>2</sup> (13Amp only)
- 2 Earth Terminals for easy installation - Single Pole
- Supplied with M3.5 x 30mm fixing screws
- Front Plate Depth - Single Pole - 9mm



Minimum / Box quantity: 10/200

Minimum order quantity: 10



Dimensions  
86 x 86 x 9mm  
Fixing Centre  
60.3mm  
Minimum Box Depth  
25mm



### Code: AXMSK1

1 Gang Unswitched 13A

- Contact Gap - 3mm
- Minimum Depth - Plastic/PVC box - 25mm
- Terminal Capacity - 3 x 2.5mm<sup>2</sup> (13Amp only)
- 2 Earth Terminals for easy installation - Single Pole
- Supplied with M3.5 x 30mm fixing screws
- Front Plate Depth - Single Pole - 9mm



Minimum / Box quantity: 10/200

Minimum order quantity: 10



Dimensions  
86 x 146 x 9mm  
Fixing Centre  
120.6mm  
Minimum Box Depth  
25mm



**Code: AXMSK2**

- 2 Gang Unswitched 13A
- Contact Gap - 3mm
  - Minimum Depth - Plastic/PVC box - 25mm
  - Terminal Capacity - 4x2.5mm<sup>2</sup> (13Amp only)
  - 2 Earth Terminals for easy installation - Single Pole
  - Supplied with M3.5 x 30mm fixing screws
  - Front Plate Depth - Single Pole - 9mm

g	1G	v
131	1P	250

Minimum / Box quantity: 10/100  
Minimum order quantity: 10



Dimensions  
86 x 146 x 9mm  
Fixing Centre  
120.6mm  
Minimum Box Depth  
25mm



**Code: AXMSSK2**

- 2 Gang Switched 13A
- Contact Gap - 3mm
  - Minimum Depth - Plastic/PVC box - 25mm
  - Terminal Capacity - 3 x 2.5mm<sup>2</sup> (13Amp only)
  - 2 Earth Terminals for easy installation - Single Pole
  - Supplied with M3.5 x 30mm fixing screws
  - Front Plate Depth - Single Pole - 9mm

g	2G	v
156	1P	250

Minimum / Box quantity: 10/100  
Minimum order quantity: 5



Dimensions  
86 x 146 x 9mm  
Fixing Centre  
120.6mm  
Minimum Box Depth  
25mm



**Code: AXMSSK2DP**

- 2 Gang Switched 13A DP
- Contact Gap - 3mm
  - Minimum Depth - Plastic/PVC box - 25mm
  - Terminal Capacity - 3 x 2.5mm<sup>2</sup> (13Amp only)
  - 2 Earth Terminals for easy installation - Single Pole
  - Supplied with M3.5 x 30mm fixing screws
  - Front Plate Depth - Double Pole - 9mm

g	2G	v
167	2P	250

Minimum / Box quantity: 10/100  
Minimum order quantity: 5



Dimensions  
86 x 146 x 9mm  
Fixing Centre  
120.6mm  
Minimum Box Depth  
25mm



**Code: AXMSSK2/USB**

- 2 Gang Switched/USB 13A
- Contact Gap - 3mm
  - Minimum Depth - Plastic/PVC box - 25mm
  - Terminal Capacity - 3 x 2.5mm<sup>2</sup> (13Amp only)
  - 2 Earth Terminals for easy installation - Single Pole
  - Supplied with M3.5 x 30mm fixing screws
  - Front Plate Depth - Single Pole - 9mm

g	2G	v
196	1P	250

Minimum / Box quantity: 10/100  
Minimum order quantity: 10

## SOCKETS

Blank Plates & Shaver Sockets (110v/240v)



Dimensions  
86 x 86 x 9mm

Fixing Centre  
60.3mm

Minimum Box Depth  
16mm



### Code: AXMBP1

- 1 Gang Blank Plate
- Minimum Depth - Metal/Plastic/PVC Box 16mm
  - Designed to cover 1 Gang Flush Boxes
  - Supplied with M3.5 x 25mm (long) fixing screws
  - Conforms to BS 5733



Minimum / Box quantity: 10/200  
Minimum order quantity: 20



Dimensions  
86 x 146 x 9mm

Fixing Centre  
120.6mm

Minimum Box Depth  
16mm



### Code: AXMBP2

- 2 Gang Blank Plate
- Supplied with M3.5 x 25mm long fixing screws
  - Minimum Depth - Metal/Plastic/PVC Box 16mm
  - Designed to cover 2 Gang Flush Boxes



Minimum / Box quantity: 10/100  
Minimum order quantity: 20



Dimensions  
146 x 86 x 13mm

Fixing Centre  
120.6mm (Vertical)

Minimum Box Depth  
47mm



### Code: AXMWSS1DV

- 110/240v Dual 20vA
- Input 240v AC - Output 240v or 110v
  - Terminal Capacity - 2 x 2.5mm<sup>2</sup>
  - Minimum Depth - Metal/Plastic/PVC Box 47mm
  - Supplied with M3.5 x 30mm fixing screws



Minimum / Box quantity: 10/100  
Minimum order quantity: 5

### Profit Maximiser...

The AXM range was developed as a select range of essential electrical lines to provide increased profitability potential for our customers. We tailor made the range to offer items that are staple purchases within the electrical trade.

...Please call our sales team  
or speak to your area sales manager for more details.

FULLY  APPROVED







## Features & Benefits

- Approvals:- (ASTA, UKCA, CE)
- Construction:- White Urea Formaldehyde
- Voltage:- 240v AC 50/60Hz
- Supplied with M3.5 fixing screws and screw covers
- Complete with a 25 years guarantee



Suitable for use in commercial & domestic environments

## LIGHTING

### Lampholders & Ceiling Switches (10A & 45A)



Dimensions  
Ø88 x 256mm  
Fixing Centre  
n/a  
Minimum Box Depth  
n/a

Code: **CEDPS6T2**

Pendant Set 6" Drop T2 100W to BS60598-2-1

- Clear Polycarbonate Base
- Heat resistant cable 0.75mm<sup>2</sup> 2 core (BASEC approved - BS 6141)
- Terminal Capacity - 2 x 1.5mm<sup>2</sup> / Rated Load Capacity - 2A
- T2 - lamp holder (LHT2S) metal insert and ceiling rose (CR3TE)
- BS EN-60598-2-1

g 126	2A n/a	v 250
----------	-----------	----------

Minimum / Box quantity: 10/200  
Minimum order quantity: 10



Dimensions  
86 x 86 x 13mm  
Fixing Centre  
60.3mm  
Minimum Box Depth  
35mm

Code: **AXMCLS45N**

Ceiling Switch 45A + Neon (Double Pole)

- Indicator complies with IEC-16th wiring regulations
- 3mm contact gap when in off position
- Terminal Capacity - 1 x 16mm<sup>2</sup>
- Minimum Depth - Metal/Plastic/PVC Box - 35mm
- Rear projection 20mm approx.
- Neon indicator & mechanical pull on/off identification

g 148	45A 2P	v 250
----------	-----------	----------

Minimum / Box quantity: 10/200  
Minimum order quantity: 10



Dimensions  
Ø73 x 45mm  
Fixing Centre  
n/a  
Minimum Box Depth  
n/a

Code: **AXMCPS2**

Ceiling Switch 2 Way 10A

- Designed for use in bathrooms
- Operates on mains and low voltage lighting
- Direct retrofit for conventional pull-cord
- Terminal Capacity - 2 x 1.5mm<sup>2</sup> / Rated Load Capacity - 6A
- Minimum Depth - Metal/Plastic/PVC Box 25mm
- Supplied with M3.5 x 30mm fixing screws and circular back box

g 73	10A 1P	v 240
---------	-----------	----------

Minimum / Box quantity: 10/200  
Minimum order quantity: 10

## SOCKETS

### Cooker Sockets (45Amp)



Dimensions  
85 x 85 x 11mm  
Fixing Centre  
60.3mm  
Minimum Box Depth  
25mm



Code: **AXMCS45**

45A Cooker Switch (Double Pole)

- 45Amp D.P. main switch with 13Amp socket
- Terminal Capacity - 2 x 10mm<sup>2</sup>, 1 x 10mm<sup>2</sup>
- Supplied with M3.5 x 30mm fixing screws



Minimum / Box quantity: 10/100

Minimum order quantity: 10



Dimensions  
86 x 86 x 11mm  
Fixing Centre  
60.3mm  
Minimum Box Depth  
25mm



Code: **AXMCS45N**

45A Cooker Switch + Neon (Double Pole)

- 45Amp D.P. main switch + Neon with 13Amp socket
- Terminal capacity - 2 x 10mm<sup>2</sup>, 1 x 10mm<sup>2</sup>
- Supplied with M3.5 x 30mm fixing screws



Minimum / Box quantity: 10/100

Minimum order quantity: 10



Dimensions  
86 x 146 x 11mm  
Fixing Centre  
120.6mm  
Minimum Box Depth  
25mm



Code: **AXMCS45SK\***

45A Cooker Switch Socket (Double Pole)

- 45Amp D.P. main switch with 13Amp socket
- Terminal capacity - 2 x 10mm<sup>2</sup>, 1 x 10mm<sup>2</sup>
- Supplied with M3.5 x 30mm fixing screws



Minimum / Box quantity: 5/100

Minimum order quantity: 5



Dimensions  
86 x 146 x 11mm  
Fixing Centre  
120.6mm  
Minimum Box Depth  
25mm



Code: **AXMCS45SKN\***

45A Cooker Switch Socket + Neon (Double Pole)

- 45Amp D.P. main switch with 13Amp socket
- Terminal capacity - 2 x 10mm<sup>2</sup>, 1 x 10mm<sup>2</sup>
- Supplied with M3.5 x 30mm fixing screws



Minimum / Box quantity: 5/100

Minimum order quantity: 5



Dimensions  
86 x 86 x 11mm  
Fixing Centre  
60.3mm  
Minimum Box Depth  
47mm



Code: **AXMCP45**

45A Cooker Outlet Plate

- Cable clamp accommodates 4mm<sup>2</sup> to 16mm<sup>2</sup> cable for 45Amp
- Terminal capacity - 3 x 2.5mm<sup>2</sup>
- Supplied with M3.5 x 30mm fixing screws



Minimum / Box quantity: 10/100

Minimum order quantity: 10

\* Horizontal.



## Features & Benefits

- Approvals:- (ASTA, UKCA, CE)
- Construction:- White Urea Formaldehyde
- Voltage:- 240v AC 50/60Hz
- Terminal capacity - 3 x 2.5mm<sup>2</sup>
- Supplied with M3.5 x 30mm fixing screws and screw covers



Suitable for use in commercial & domestic environments

## SPURS & CONNECTION UNITS

### Spurs (13A)



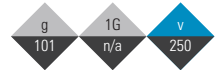
Dimensions  
86 x 86 x 13mm  
Fixing Centre  
60.3mm  
Minimum Box Depth  
25mm



Code: **AXMSP**

Unswitched Spur 13A

- Flex outlet at lower edge by knockout (choice of use)
- Cable clamp accommodates 2.5mm<sup>2</sup> flexible cable
- Fitted with 13Amp Fuse unless specified otherwise
- Minimum Depth - Metal/Plastic/PVC Box 25mm
- Terminal capacity - 3 x 2.5mm<sup>2</sup>, 4 x 2.5mm<sup>2</sup> (Earth)
- Supplied with M3.5 x 30mm fixing screws



Minimum / Box quantity: 10/200  
Minimum order quantity: 10



Dimensions  
86 x 86 x 13mm  
Fixing Centre  
60.3mm  
Minimum Box Depth  
25mm



Code: **AXMSPS**

Switched Spur 13A

- Flex outlet at lower edge by knockout (choice of use)
- Cable clamp accommodates 2.5mm<sup>2</sup> flexible cable
- Fitted with 13Amp Fuse unless specified otherwise
- Minimum Depth - Metal/Plastic/PVC Box 25mm
- Terminal capacity - 3 x 2.5mm<sup>2</sup>, 4 x 2.5mm<sup>2</sup> (Earth)
- Supplied with M3.5 x 30mm fixing screws



Minimum / Box quantity: 10/200  
Minimum order quantity: 10



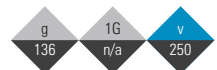
Dimensions  
86 x 86 x 13mm  
Fixing Centre  
60.3mm  
Minimum Box Depth  
25mm



Code: **AXMSPSN**

Switched Spur 13A + Neon

- Flex outlet at lower edge by knockout (choice of use)
- Cable clamp accommodates 2.5mm<sup>2</sup> flexible cable
- Fitted with 13Amp Fuse unless specified otherwise
- Minimum Depth - Metal/Plastic/PVC Box 25mm
- Terminal capacity - 3 x 2.5mm<sup>2</sup>, 4 x 2.5mm<sup>2</sup> (Earth)
- Supplied with M3.5 x 30mm fixing screws



Minimum / Box quantity: 10/200  
Minimum order quantity: 10

## SPURS & CONNECTION UNITS

Connection Units (20A)

### Features & Benefits

- Approvals:- (ASTA, UKCA, CE)
- Construction:- White Urea Formaldehyde
- Voltage:- 240v AC 50/60Hz
- Terminal capacity - 3 x 2.5mm<sup>2</sup>
- Supplied with M3.5 x 30mm fixing screws and screw covers



g	1G	v
102	n/a	250



Code: **AXMFOP20**  
Flex Outlet Plate 20A

- Minimum Depth - Metal/Plastic/PVC Box 25mm
- Supplied with M3.5 x 30mm fixing screws

Dimensions  
85 x 85 x 13mm  
Fixing Centre  
60.3mm  
Minimum Box Depth  
25mm

Minimum / Box quantity: 10/200  
Minimum order quantity: 10

## MEDIA & COMMUNICATIONS

T.V. & Telephone Sockets

### Features & Benefits

- Approvals:- (ASTA, UKCA, CE)
- Construction:- White Urea Formaldehyde
- Voltage:- 240v AC 50/60Hz
- Supplied with M3.5 x 30mm fixing screws and screw covers



AXMTVS1



AXMSTVFO



AXMTVS2



AXMTFLM1



AXMTFLS1

Code	Description	Outlets	Dimensions (mm)	Fixing Centre (mm)	Minimum Box Depth (mm)	Weight	Min/Box
1 Gang & 2 Gang							
AXMTVS1	1 Gang T.V. Socket (Flush)	1 Gang	86 x 86 x 9	60.3	25	n/a	10/200
AXMSTVFO	1 Gang T.V. & SAT (Flush)	2 Gang	86 x 86 x 9	60.3	25	77g	10/200
AXMTVS2	2 Gang T.V. Socket (Flush)	2 Gang	86 x 86 x 9	60.3	25	82g	10/200



Code	Description	Outlets	Dimensions (mm)	Fixing Centre (mm)	Minimum Box Depth (mm)	Weight	Min/Box
Master / Slave							
AXMTFLM1	Telephone Flush Master Socket	1 Gang	86 x 86 x 9	60.3*	25	69g	10/200
AXMTFLS1	Telephone Flush Slave Socket	1 Gang	86 x 86 x 9	60.3	25	61g	10/200



## Features & Benefits

- Approvals:- (ASTA, UKCA, CE)
- Construction:- White Urea Formaldehyde
- Voltage:- 240v AC 50/60Hz
- Terminal capacity - 3 x 1.5mm<sup>2</sup>
- Supplied with M3.5 x 30mm fixing screws and screw covers



Suitable for use in commercial & domestic environments

## DIMMERS

### Push Dimmers (250W & 400W)

#### Code: AXMDP250/12W

- 1 Gang 2 Way Push Dimmer 250W (Double Pole)
- 2 way dimmers are suitable for 1 & 2 way switching
  - Suitable for Tungsten Filament only
  - Minimum wattage dimming can be operated - 40W
  - Terminal Capacity - 1 x 1.5mm<sup>2</sup>
  - Minimum Depth - Metal/Plastic/PVC Box 25mm
  - Supplied with M3.5 x 30mm fixing screws



Minimum / Box quantity: 10/50  
Minimum order quantity: 10



Dimensions  
86 x 86 x 9mm  
Fixing Centre  
60.3mm  
Minimum Box Depth  
25mm



#### Code: AXMDP400/12W

- 1 Gang 2 Way Push Dimmer 400W (Double Pole)
- 2 way dimmers are suitable for 1 & 2 way switching
  - Suitable for Tungsten Filament only
  - Minimum wattage dimming can be operated - 40W
  - Terminal Capacity - 1 x 1.5mm<sup>2</sup>
  - Minimum Depth - Metal/Plastic/PVC Box 25mm
  - Supplied with M3.5 x 30mm fixing screws



Minimum / Box quantity: 10/50  
Minimum order quantity: 10

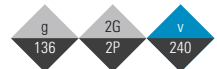


Dimensions  
86 x 86 x 9mm  
Fixing Centre  
60.3mm  
Minimum Box Depth  
25mm



#### Code: AXMDP250/22W

- 2 Gang 2 Way Push Dimmer 250W (Double Pole)
- 2 way dimmers are suitable for 1 & 2 way switching
  - Suitable for Tungsten Filament only
  - Minimum wattage dimming can be operated - 40W
  - Terminal Capacity - 1 x 1.5mm<sup>2</sup>
  - Minimum Depth - Metal/Plastic/PVC Box 25mm
  - Supplied with M3.5 x 30mm fixing screws

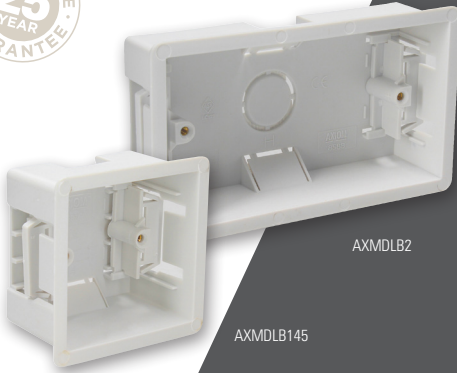


Minimum / Box quantity: 10/50  
Minimum order quantity: 10



Dimensions  
86 x 86 x 9mm  
Fixing Centre  
60.3mm  
Minimum Box Depth  
25mm



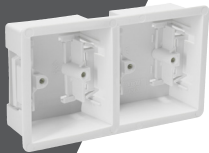


AXMDLB2

AXMDLB145

### Dry Lining Boxes

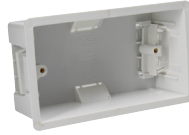
- Will fit board thickness 6.35mm - 15mm and provide easy pull lugs for easy fixing to cavity wall installations
- Large flange around front sides to prevent slipping into cavity
- Manufactured from flame retardant thermo-plastic material
- Two side cable entry plus 25mm base knockout
- Back of the box can be used as template to mark box (cavity hole)
- Blue nylon lugs have one side lips to pull the lug easier with finger to grip the cavity wall



AXMDLB20



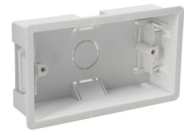
AXMDLB145



AXMDLB245



AXMDLB1



AXMDLB2

Code	Description	Outlets	Dimensions (mm)	Fixing Centre (mm)	Minimum Box Depth (mm)	Weight	Min/Box
1 Gang & 2 Gang							
AXMDLB20	2 Gang Dry Lining Box (Dual)	2 Gang	145 x 83 x 35	120.6	35	52g	10/200
AXMDLB145	1 Gang Dry Lining Box 45mm	1 Gang	83 x 83 x 35	60.3	47	49g	10/200
AXMDLB245	2 Gang Dry Lining Box 45mm	2 Gang	145 x 83 x 47	120.6	47	75g	10/200
AXMDLB1	1 Gang Dry Lining Box 32mm	1 Gang	83 x 83 x 35	60.3	35	36g	10/400
AXMDLB2	2 Gang Dry Lining Box 32mm	1 Gang	145 x 83 x 35	120.6	35	52g	10/200

\* Minimum order quantity 10



## Features & Benefits

- Manufactured from flame retardant thermo-plastic material
- Knockout provided on the side & base for cable entry
- Supplied in 16mm (single) 25, 32 & 45mm depths (Single & Twin)
- 16mm box supplied with earth terminal

Suitable for use in commercial & domestic environments



- Approvals:- (UKCA, CE)
- Construction:- Urea Formaldehyde
- Voltage:- 240v AC 50/60Hz
- Colour:- White
- Guarantee:- 25 Years



AXMPB116



AXMPB125



AXMPB225



AXMPB232



AXMPB232D



AXMPB132



AXMPB145



AXMPB245



AXMPBARC

Code	Description	ASTA Approved	Outlets	Knockouts (mm)	Dimensions (mm)	Fixing Centre (mm)	Box Depth (mm)	Weight	Min/Box
<b>1 Gang &amp; 2 Gang</b>									
AXMPB116	Pattress Box 16mm	✓	1 Gang	1 x each side / 1 x base	86 x 86 x 16	60.3	16	56g	10/200
AXMPB125	Pattress Box 25mm	✓	1 Gang	1 x each side / 1 x base	86 x 86 x 25	60.3	25	71g	10/300
AXMPB225	Pattress Box 25mm	✓	2 Gang	n/a	146 x 86 x 25	120.6	25	92g	10/200
AXMPB232	Pattress Box 32mm	✓	2 Gang	1 x each side / 1 x base	146 x 86 x 32	120.6	32	116g	10/200
AXMPB232D	Pattress Box Dual 32mm	✓	2 Gang (Dual)	1 x each side / 1 x base	145 x 83 x 35	120.6	35	61g	5/100
AXMPB132	Pattress Box 32mm	✓	1 Gang	1 x each side / 1 x base	86 x 86 x 32	60.3	32	87g	10/300
AXMPB145	Pattress Box 45mm	✓	1 Gang	1 x each side / 1 x base	86 x 86 x 47	60.3	47	113g	10/200
AXMPB245	Pattress Box 45mm	✓	2 Gang (Twin)	n/a	146 x 86 x 47	120.6	47	182g	10/100
AXMPBARC	Architrave Pattress Box	✓	1 Gang	1 x base	87 x 20 x 32	60.3*	32	31g	10/100



**CED**  
ELECTRICAL  
GROUP

44-48 FRESHWATER ROAD,  
DAGENHAM, ESSEX RM8 1RX (UK)  
020 8503 8500  
020 8503 8900  
[www.cedelectrical.co.uk](http://www.cedelectrical.co.uk)  
[sales@cedelectrical.co.uk](mailto:sales@cedelectrical.co.uk)